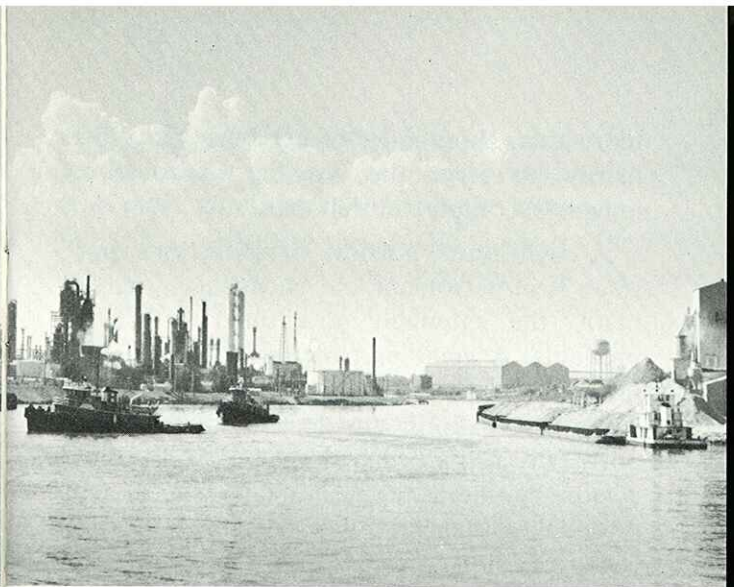
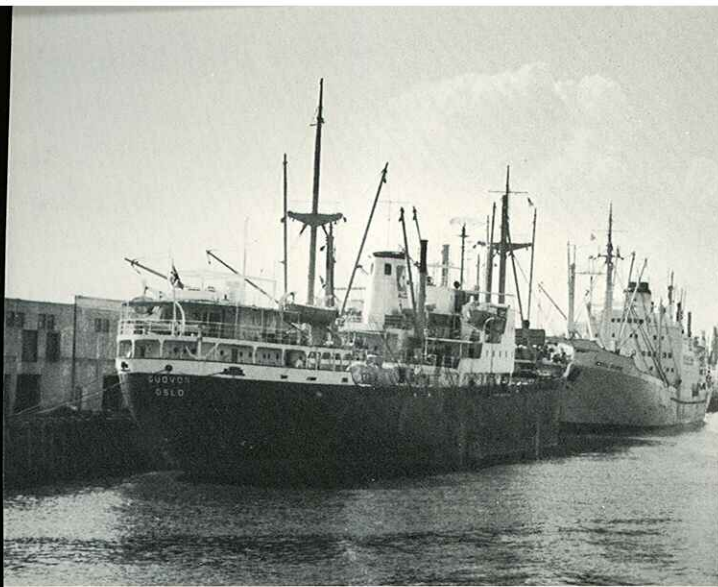


PORT of HOUSTON FACT BOOK

Industry and Freight Facilities on Houston's Ship Channel.





Houston: Port of Call for Ships and Industry

When the Port of Houston was first established by city ordinance in 1841, it must have produced snickers of ridicule from experienced world travelers. The “port” was located on Buffalo Bayou — a shallow meandering stream approximately 20 feet wide and 50 miles from the nearest deep water.

But whether the port was born of foresight, ambition, or downright daydreaming, it has lived up to its name. The Port of Houston is now one of the top three ports in the nation. Each year, some 4,000 ships and 20,000 barges handle nearly 70 million tons of cargo through this port. Nearly 200 industrial corporations have major plants and facilities along its banks.

The major step toward this fantastic transformation was taken in 1910 with the formation of the Harris County Ship Channel Navigation District, now the Port of Houston Authority. Buffalo Bayou was dredged and widened, and upon its completion in 1914,

the first ocean-going vessels were able to navigate from the Gulf of Mexico to the Port of Houston. At that time, Houston’s population was still less than 100,000. In the next half century, the city’s population increased 16-fold.

Since its opening, Houston’s Ship Channel has spurred tremendous industrial growth. The Port Commissioners on the Port of Houston Authority now have jurisdiction over a concentration of industrial plants and marine facilities valued at more than three billion dollars — and growing daily.

As commerce along the channel banks has increased, the Port of Houston has continued to expand and enlarge facilities to keep pace. The Port Authority owns and operates public wharves, warehouses, grain elevators, and other facilities with a total of 39 berths for ocean-going vessels.

A new \$100-million terminal at the juncture of the Ship Channel and Galveston Bay will help Houston become one of the world’s top ports for handling the giant container and barge-carrying ships now beginning to appear.

An expansion of the Port’s Bayport Division will add another ship turning basin and

more than three miles of berthing space, primarily to serve the growing hydrocarbon industrial complex in that area.

A significant portion of Houston's port trade is in petroleum and chemicals — particularly the shipment of refined petroleum products. A great part of the country's shipments of oil field supplies and equipment for overseas locations are loaded through the port. It is also a prime shipper of bulk grains, cotton, synthetic rubber, metal products, and machinery items. It is the leading port of entry for foreign-made steel.

The Manned Spacecraft Center of the National Aeronautics and Space Administration also has access to the channel and is a contributing factor in the growth of the channel area.

The Houston Ship Channel itself ranges from 300 to 400 feet in bottom width and from 36 to 40 feet in depth. It is navigated by some 120 steamship lines, including 90 tanker operators, offering cargo service to 250 world ports. It will accommodate any merchant freighter afloat. Channel construction and maintenance is directed by the U.S. Army Engineers.

Besides the port-owned docking facilities, 10 additional berths are available in four privately-owned steamship terminals. Private industry also has numerous docks for deep-water supply ships.

A multitude of common carriers provide overland transportation to the port. The Port Terminal Railroad Association handles about 1,200 cars a day for six trunkline railroads. Highway service is offered by 35 major motor freight carriers and numerous special commodity carriers.

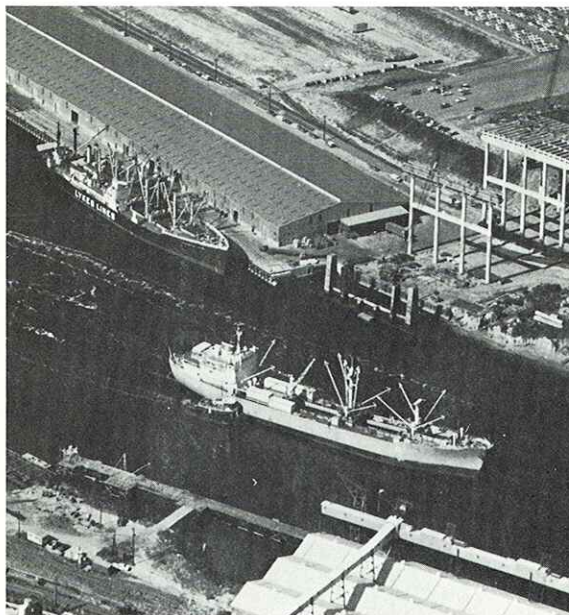
Over the years, Texas Commerce Bank has been closely associated with the development

of the Port of Houston. The late Jesse H. Jones, a key figure of the Franklin D. Roosevelt administrations and the man who built this bank into one of the largest in the Southwest, was the first chairman of the Houston Harbor Board. Later, he was a leader in the campaign for the Ship Channel's construction.

Because of our historical association with the port, we are pleased to publish this summary of the facilities along the channel. The summary lists companies and public facilities in order of their location, beginning at Allen's Landing Park close to the heart of Houston and moving downstream to Galveston Bay.

An alphabetical list of all companies and facilities begins on Page 25, and a fold-out map of the channel, pinpointing each major installation, may be found facing page 6.

We believe this booklet will be of value to any company either doing business in the Houston area or considering plans to locate here.

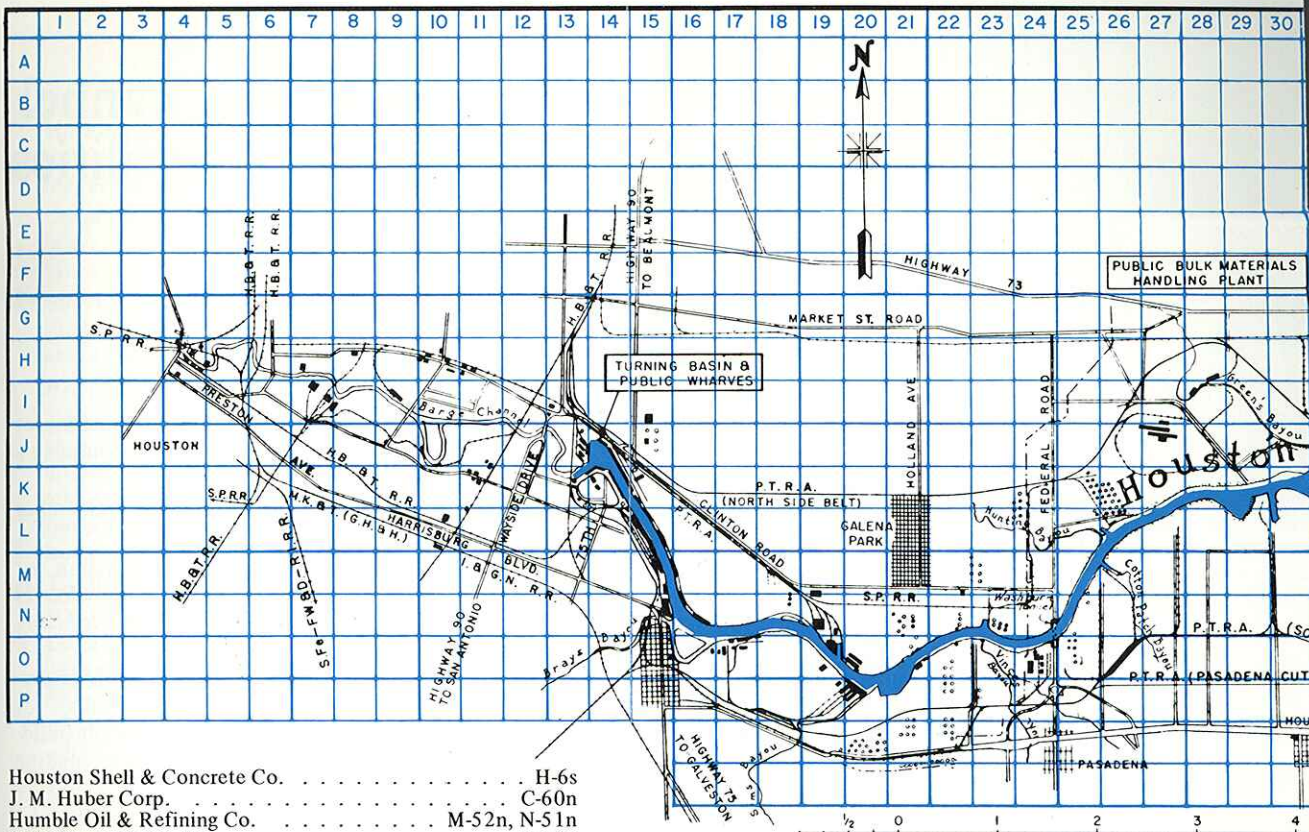


Key to Industries along Houston's Ship Channel

EXAMPLES: H-4n – Coordinates H and 4, north side channel
 H-4s – Coordinates H and 4, south side channel

AMF Tuboscope	H-32n
Air Products & Chemicals, Inc.	S-48s
American Commercial Lines, Inc.	N-15s
American Cryogenics, Inc.	HH-50s
American Plant Food Corp.	O-20n
Anchor Boat Works, Inc.	V-54s
Arco Chemical Co.	E-37n, HH-50s
Armco Steel Corp.	K-27n, J-27n
Armour Agricultural Chemical Co.	K-14s
Ashland Chemical Co.	J-50n
Atkinson Island Barge Basin	W-57n
Atlantic Richfield Co.	P-21s
Bayou Refining Co., Inc.	N-25s
Bayport	HH-50s
Bayport Fabricating Co.	Z-50s
Bethlehem Steel Co.	K-39n
Big Three Industries, Inc.	HH-50s
Bludworth Shipyard, Inc.	N-15s
Borden Chemical Co.	H-32n
Brown & Root, Inc.	H-8n
Brown & Root Marine Operators, Inc.	K-29n
Byer's Barge Terminal	I-27n
Cargill, Inc.	L-38n
Carpenter Bayou Barge Canal	I-41n
CB/Southern	K-40n
Celanese Chemical Co.	HH-50s, N-42s
Channel Shipyard Co., Inc.	G-43n
Charter International Oil Co.	O-16s, O-19s
Chemetron Chemicals Inc.	W-53s
Clinton Island Turning Basin	P-20s
Colonial Pipeline Co.	L-32ns
Crispin Terminal	J-13n
Crown Central Petr. Corp.	O-25s
Dart Industries	HH-50s
Diamond Shamrock Corp.	N-39s, I-30n
Dixie Chemical Co.	HH-49s
Dresser Industries, Inc.	L-39n
Dundee Cement Co.	L-39n
Du Pont, E. I., de Nemours & Co.	S-49s
Elco Shipside Elevator	O-17s
Enjay Chemical Co.	J-15n, M-52n
Equity Export Corp., Inc.	K-40s
Ethyl Corporation	L-30s
FMC Corporation	HH-50s
G & H Towing Co.	V-54s
Gen American Trans. Corp.	N-22n, N-25s
Goodpasture Inc.	N-21n
Goodyear Tire & Rubber Co.	O-18s
Greens Bayou Terminal	I-29n
Gulf Atl. Whse. Co.	O-20n, L-15s
Gulf Bitulithic Co.	H-4s
Gulf Coast Chemicals Co., Inc.	HH-50s
Gulf Coast Portland Cement Co.	J-11s
Gulf Oil Corp.	L-26n, C-60n
Haldor Topsoe, Inc.	HH-50s
Harrisburg Mach. Co.	O-15s
Hess Terminal	L-26n
Hill & Hill Truck Line, Inc.	G-32n
Houdry-Topsoe Company	HH-50s
Houston Barge Side Warehouse, Inc.	J-10s
Houston Barge Terminal	J-10s
Houston Contracting Co.	H-32n
Houston Lighting & Power Co.	H-5s, O-23s, N-45s

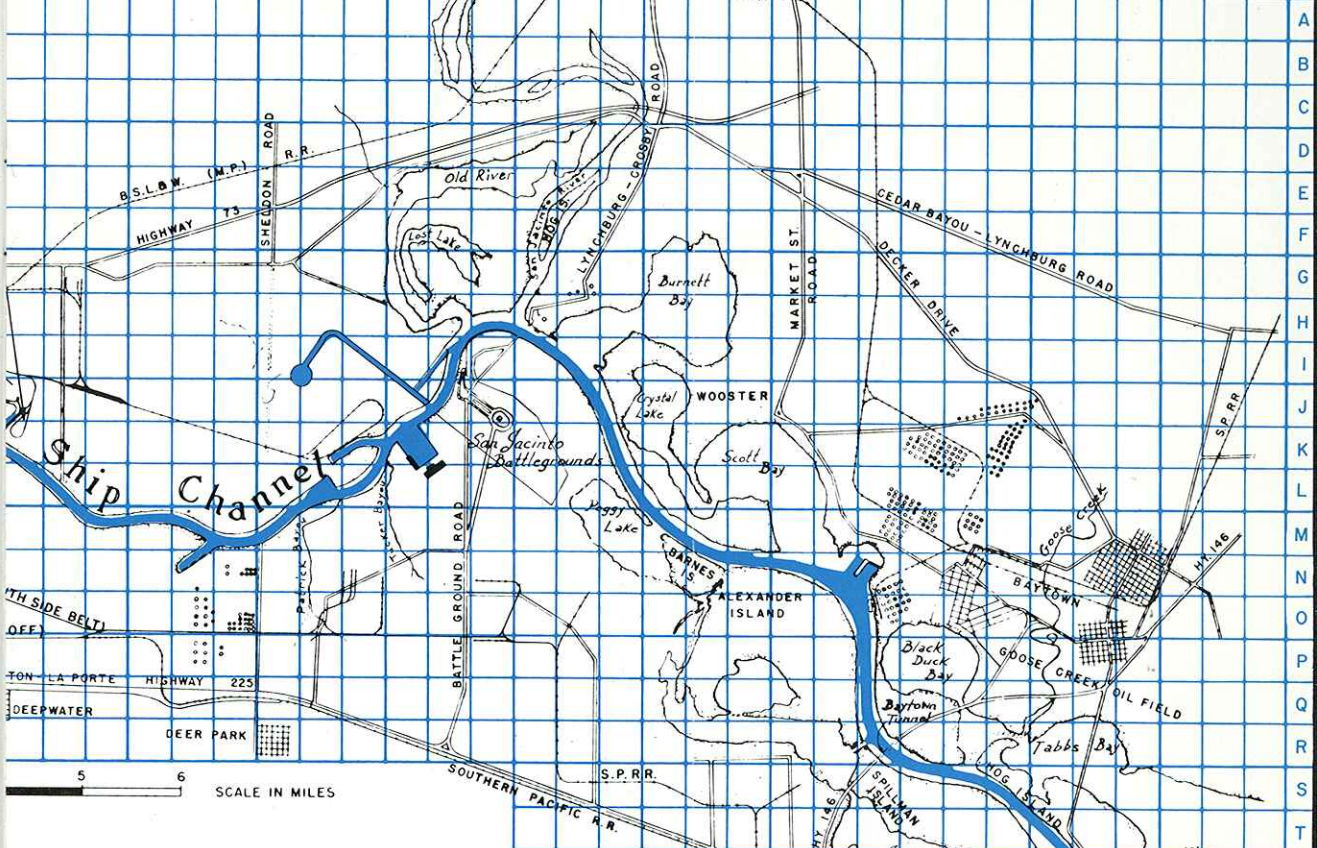




Houston Shell & Concrete Co.	H-6s
J. M. Huber Corp.	C-60n
Humble Oil & Refining Co.	M-52n, N-51n
Hutchinson-Hayes, Inc.	H-32n
Ideal Cement Co.	N-19n
I.T.T. Corp.	V-53s
J and R Dock	K-40s
Jacintoport	H-32n
Jersey Enterprises	HH-50s
Koppers Co., Inc.	K-26n
LaGloria Oil & Gas Co.	O-17s
Lockheed Aircraft Corp.	HH-50s
Lone Star Industries, Inc.	HH-50s, O-15s, O-17s
Lone Star Marine Salvage Co.	J-13n
Long Reach Docks	L-15s
Lubrizol Corp.	HH-50s, P-38s
Lynchburg Ferry	H-43ns
Manchester Terminal	P-20s
Mangone Shipbuilding Co.	M-15s
Manned Spacecraft Center-Nasa	(Off Map)
Marine Repairs, Inc.	N-15s
Merichem Co.	H-28n
Millray Corp. of Houston	H-41n
Mobay Chemical Co.	M-60n
National Marine Service, Inc.	I-41n
National Molasses Co.	O-17s
National Petro Chemicals Corp.	O-43s
Natural Gas Oderizing, division of Helmerich & Payne, Inc.	L-52n
Nav. Dist. Bulk Materials Handling Plant	K-31n
Navigation District Wharves, Industrial Areas	M-16n, O-17s
	K-15n, J-14n, M-16n, K-15n, P-18s, H-13n, O-26s, P-20s
Norris & Stanford	V-54s
Occidental Chemical Co.	O-18s
Olin Corp.	L-27s
Oxirane Chemical Co.	HH-50s

Pacific Molasses Co., Ltd.	K-14s
Parker Bros. & Co., Inc.	J-10s
Pearsall Corporation	O-43s
Pennsalt Chemicals Corp.	J-28n
Petro Chemical Investment Corp.	K-39n
Petrolite Corp.	HH-50s
Petro-Tex Chemical Corp.	Q-18s
Phillips Industrial Sites	N-43s
Phillips Petroleum Co.	L-29s
Platzer Shipyard Inc.	I-29n
Premier Petrochemical Co.	O-25s
Prince Green's Yacht Basin	V-55s
Production Systems International, Inc.	I-38n
Radcliff Materials, Inc.	O-20n
Reichhold Chemicals, Inc.	H-28n
Rhodia Inc., Chipman Division	P-23s
Rohm and Haas Co.	N-39s
Rollins International, Inc.	N-40s
San Jacinto Battleground & Monument	J-42s
Sea-Land Service, Inc.	K-15n
Shell Chemical Co.	P-36s
Shell Oil Co.	P-35s
Shipside Warehouse No. 4	K-13n
Signal Chemical Co.	HH-50s
Sims Bayou Bulk Liquid Petroleum Facility	P-20s
Sinclair-Koppers Co.	Q-19s
Smith, A. O., Corp. of Texas	J-27n
South Coast Terminals	O-17s, I-7s
Southern Pacific RR Co.	O-19n
Southland Paper Mills, Inc.	(Off Map)
Southwest Chemical & Plastics Co.	M-43s
Southwest Cryogenics, Inc.	N-39s

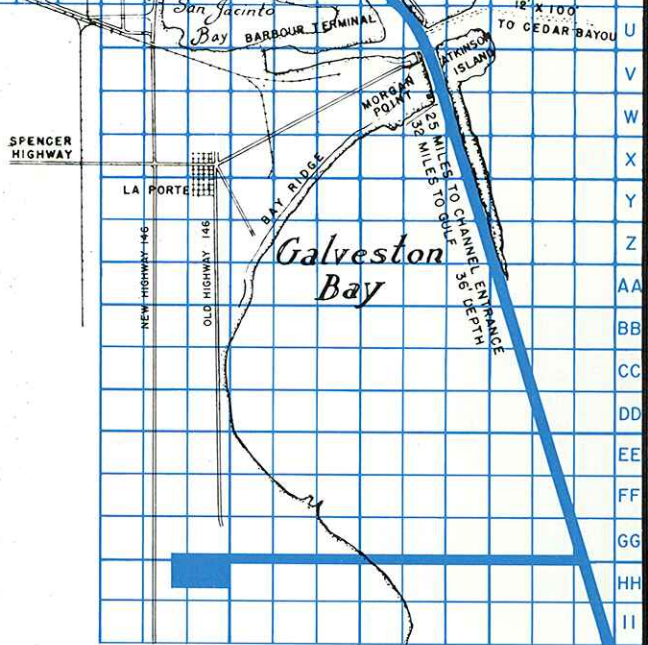
31 32 33 34 35 36 37 38 39 40 41 42 43 44 45 46 47 48 49 50 51 52 53 54 55 56 57 58 59 60



A
B
C
D
E
F
G
H
I
J
K
L
M
N
O
P
Q
R
S
T
U
V
W
X
Y
Z
AA
BB
CC
DD
EE
FF
GG
HH
II

Southwest Latex Corp.	HH-50s
Southwestern Barge Fleet Service, Inc.	D-45n
Standard Dredging Corp..	V-54s
Stauffer Chem. Co.	L-27s, O-16s, M-54n, I-28n
Jacob Stern & Sons, Inc.	K-14s
TEC Terminal	K-41s, N-21n
Tenneco Chemicals, Inc.	M-34s
Tenneco Oil Co.	V-52s
Tenn-Tex. Alloy Corp. of Houston	I-28n
Texaco Inc.	N-23n
Texas Alkyls, Inc.	O-42s
Texas Industries, Inc.	N-24n
Todd Shipyards Corp.	K-30n
Trinity Division, Portland Cement Co.	I-8s
Turning Basin Compress Co.	J-13n
Union Carbide Corp., Linde Division	N-39s
U. S. Gypsum Co.	O-20n
U. S. Industrial Chemicals Co.	N-44s
U. S. Plywood-Champion Papers Inc.	O-24s
U. S. Steel Corp.	X-60n
U. S. Steel Supply Division	O-16n
Universal Steel Corp.	K-37n
Upjohn Co.	P-44s
Velsicol Chem. Corp.	HH-50s
Walton & Son Barge Term	I-27n
Warrengas Terminal	L-26n
Washburn Tunnel	O-24s
Wyatt Division, U. S. Industries	K-32n
John Young Co., Inc.	H-4s

7b



7c

Preparing for Tomorrow's Ships

While continuing to expand conventional docking and unloading facilities, the Port of Houston has also embarked on a construction program to handle the ships of the future.

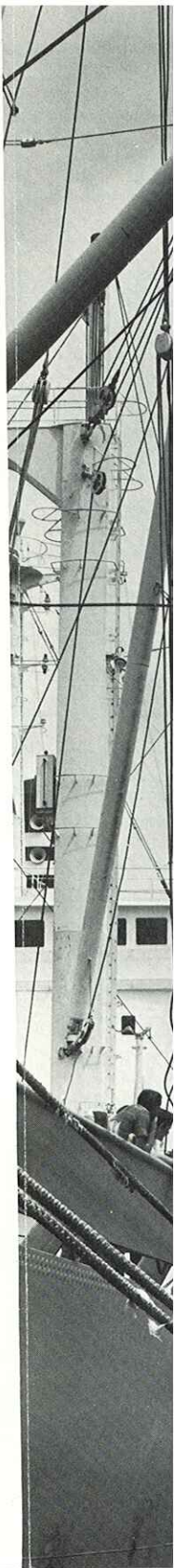
The vessels of tomorrow — which are already beginning to appear today — are the containerships and barge-carrying ships. Due to their mammoth size, these ships require enlarged channels and turning basins.

The containerships haul sealed containers of 20 to 40 feet in length. These containers look like truck-trailers without wheels. They are loaded and sealed at the shipping point, delivered to the ships by truck or train, loaded on board ship for ocean shipment, transferred back to trucks or trains at overseas ports, and delivered to the consignee — all without the cargo ever being exposed. The advantages of this unitized handling system are reduction in handling time and protection from damage or pilferage.

The new containerships can carry nearly 500 40-ft. containers. The Port of Houston has two of the giant container cranes which are necessary for loading and unloading containers. The two cranes are the first and only such cranes operating in any Gulf port. The Port's container handling facilities also include a million-dollar container marshalling yard.

One of the most important innovations in many years are the barge-carrying ships. These gargantuan vessels serve as "mother ships" for dozens of barges which fan out over hundreds of miles to receive and discharge cargo. In a year's time, a barge carrier can handle the workload of three to five conventional freighters. The barges navigate the shallower rivers to load and unload at inland ports, then are loaded back on to the ship for overseas travel. The new barge-carrying ships are close to 900 feet long and can handle up to 83 "lighters" (barges), each with a capacity of 370 tons.

A new container/barge ship terminal at Barbours Cut Terminal on the Ship Channel will provide the Port of Houston with the necessary facilities to handle the "ships of tomorrow." The \$100-million project will be in continuous development for the next 15 to 20 years.





Houston Ship Channel Industries and Facilities

(S — South side of channel; N — North side of channel)

On upper Buffalo Bayou light barge channel

- S **Houston Lighting & Power Co.** — The Gable Street Plant, built in 1901, is the oldest of the company's 10 interconnected generating plants.
- N **Southern Pacific Company** — Bulkhead and timber pier for receiving diesel oil from barges.
- S **Houston Shell & Concrete Co.**, division of McDonough Co. — Bulkhead and concrete wharves for receiving sand, clay and oyster shell; concrete mix plants and truck fleet.
- S **Horton & Horton** — Barge wharves with heavy-duty cranes and conveyer systems, silos, for receipt and storage of gravel, sand and other building materials; readymix plant, truck loading facilities.
- N **Brown & Root, Inc.** — Long steel bulkheads and a barge wharf to receive or ship steel; makes barge-mounted specialized plants; asphalt plant; large storage areas; fabricating facilities and office.
- S **Trinity Division, General Portland Cement Co.** — Large cement plant with capacity of about 41,000 CWT of cement a day, using oyster shell delivered to plant dock by barge.
- S **John Young Co.**, subsidiary of Parker Bros. & Co. — Barge docks and heavy equipment for handling shell, building materials; readymix plant.
- S **Gulf Bitulithic Co.**, division of Warren Brothers Co. — Asphalt plant; constructors and paving contractors.
- S **Parker Bros. & Co., Inc.** — Extensive barge facilities, cranes, conveyers for receipt of oyster shell, sand, clay; large suppliers of building materials; operates own barge fleet, truck fleet, readymix plants; asphalt plant.
- S **Houston Barge Terminal** — Cargo barge terminal handling steel, lumber by overhead bridge cranes; storage warehouses.
- S **Houston Barge-Side Warehouse, Inc.** — 480-foot barge wharf with warehouses to handle dry bulk commodities and general cargo; waterside cranes, conveyer, and hopper system for receiving bulk rock salt; also handle oil well drilling mud.

S Gulf
McDo
tion c
for re
N Crisp
heavy
cars an
S Radcl
shell
area a
Head
Turni
Houst
width
wharv
imme
house
N Turni
and co
S Lone
excep
S Ships
floor
wharf
N Enjay
plant
chem
adhes
S Jacob
10,00
necte
drum
S Pacifi
black
table
with p
1.
S G & l
of Wh
N Public
ity wi
an ho
N Sea-L
Indus
truck
board
the M
unloa
ships.
S Armo
work
cial fe

S **Gulf Coast Portland Cement Co.** division of McDonough Co. — Produces a variety of construction cements at a rate of 4,500 barrels daily; docks for receiving oyster shell, raw materials.

N **Crispin Terminal** — Warehouse for steel goods with heavy-duty equipment for loading, unloading railcars and trucks.

S **Radcliff Materials, Inc.** — Crane for unloading shell, conveyer and truck loading rig; large storage area at plant just above Turning Basin.

Head of navigation of deepwater ship channel

Turning Basin — Five miles east of downtown Houston, with a depth of 36 feet and maximum width of 1,300 feet; 28 public general cargo wharves provide 16,500 linear feet of berth space immediately downstream; large shipside warehouses.

N **Turning Basin Compress Co.** — Cotton warehouses and compress.

S **Lone Star Marine Salvage Co.** — Major ship repairs, except drydocking; derrick barges for heavy lifts.

S **Shipside Warehouse No. 4** — 275,000 sq. ft. of floor space; cargo received direct from ships at wharf.

N **Enjay Chemical Company** — Special products plant manufactures protective coatings, oil field chemicals, marine specialties, epoxy grout and adhesives.

S **Jacob Stern & Sons, Inc.** — Shipper of tallow; 10,000-ton capacity bulk liquid storage tanks connected to wharf by pipeline for ship loading; drumming facilities.

S **Pacific Molasses Co.** — Importer and distributor of blackstrap molasses. Exporter of animal and vegetable fats and oils. Bulk liquid storage for others with private barge dock and pipelines to City Dock # 1.

S **G & H Towing Co.** — Tugboat station downstream of Wharf No. 1 for vessel service.

N **Public Grain Elevator** — Six-million-bushel capacity with facilities to deliver 80,000 bushels of grain an hour to two ships.

N **Sea-Land Service, Inc.** — Subsidiary of Reynolds Industries, Inc. — Operates weekly integrated truck-ship freight service Houston to Eastern seaboard; to Europe, United Kingdom, Baltics and the Mediterranean; 27-ton capacity crane loads or unloads truck trailers on specialized container ships.

S **Armour Agricultural Chemical Co.** — Fertilizer works making superphosphates and other commercial fertilizers; barge unloading dock.

- S **Petco Docks** – Berth space for two vessels; two HD cotton compresses, warehouse with space for 150,000 bales of cotton.
- N **Navigation District** – Several wharves newly completed at the bend opposite the mouth of Brays Bayou and downstream.
- N **Port Houston Industrial Park** – 200-acre industrial area, accessible to road, rail and water transport with utilities available; lessees include stevedoring, cargo servicing, warehousing, scrap yard, vehicle terminal and storage.
- S **Brays Bayou** – Ship service facilities on or near Brady Island where the bayou joins the channel are provided by **Mangone Shipbuilding Co.**, **Marine Repairs, Inc.**, **Bludworth Shipyard, Inc.**, **Harrisburg Machine Co.**, and **American Commercial Lines, Inc.** Facilities include ship and barge repairs, building tugs, ships, tows and utility cargo vessels for offshore service and oceanography vessels.
- S **Stauffer Chemical Co.** – World's largest sulfuric acid production unit with a 2,000-ton daily capacity; also produces aluminum sulfate, bone charcoal and handles muriatic acid; dock for four barges.
- S **Lone Star Industries, Inc.** – Three cement kilns with annual capacity of 3,100,000 barrels; uses oyster shell as primary raw material; barge facilities.
- S **Old Manchester Wharves** – Three Navigation District wharves with 1,330 linear feet of berth space which handle products for the following industries:
- La Gloria Oil and Gas Co.**, subsidiary of Texas Eastern Transmission Corp. – Barge terminal with storage and distribution facilities for gasoline products.
- Elco Shipline Elevator Co.** – A rice export operation with a 1.5-million-bushel capacity elevator.
- South Coast Terminals, Inc.** – Tank storage of liquid chemicals and lube oils with 3,500,000 gallons on Ship Channel and 670,000 gallons on barge canal. Drumming of products; dry bulk transfer and packaging facilities.
- National Molasses Co.** Tank storage capacity for 15 million gallons of molasses and other liquid feeds.
- N **Dickson Industrial District** – 124-acre site for plants with 25 buildings containing 500,000 sq. ft. of floor space and water frontage.
- N **U. S. Steel Supply Division** – Barge terminal, transfer point and steel service center for steel products.

- S **Charter International Oil Co.** – Oil refinery produces gasolines, jet fuels, kerosene and fuel oils. Petrochemical units produce benzene, toluene, xylene, ethylbenzene, paraxylene, propylene, hexane, heptane and specialized solvents. Refinery has 72,000-barrel-a-day capacity.
- N **Southern Pacific Co., Clinton Docks** – Deepwater terminal for railroad company; three ship berths, one servicing specialized bulk cement carrier ship.
- N **Ideal Cement Co.** – Daily capacity exceeds 10,000 barrels; 200,000-barrel storage.
- N **Radcliff Materials, Inc.**, subsidiary of Southern Industries Corp. – Poultry feed-grinding mill, road materials and products from oyster shell and asphalt plant.
- N **Gulf Atlantic Warehouse Co.** – Cotton compress plant; 350,000 sq. ft. warehouse space with capacity for 100,000 bales of cotton. Public warehouse services for packaged industrial type products.
- S **Manchester Terminal** – Three ship berths, concrete wharves, 1,520 feet long, railroad track, transit shed, unloading platforms and depressed railroad tracks, facilities for handling highway truck traffic. 1,200,000 sq. ft. of concrete warehouse space; storage yard; two cotton compresses.
- S **Lone Star Industries, Inc.** – Ready Mix concrete plant.
- N **United States Gypsum Co.** – Paper mill and manufacturing facilities for gypsum wallboard, gypsum products, steel wall studs and hydrated lime.
- N **American Plant Food Corp.** – Sulfuric acid, ammonium sulfate and pelletized phosphates; plant has 3-acre warehouse; shipping capacity exceeds 2,000 tons daily.
- S **Clinton Island Turning Basin** – Basin provides readier management of increasing ship movement in upper channel.
- S **Sims Bayou Bulk Liquid Petroleum Facility** – Tanker dock serving product and feedstock handling through pipeline for Petro-Tex Chemical Corp.
- S **Petro-Tex Chemical Corp.** – One of top producers of butadiene butenes, other olefins, aviation alkylates, tetrahydrophthalic anhydride, and maleic anhydride. Annual butadiene capacity of one billion pounds. Annual neoprene capacity of 45 million pounds from butadiene.
- S **Occidental Chemical Company** – Produces complete fertilizers for agriculture and home lawns. Fertilizer storage facility and agricultural chemical warehouse.
- N **Goodpasture, Inc.** – 8,500,000 bushel capacity export elevator, 200,000 sq. ft. dockside ware-

house with complete bagging facilities, general cargo handling, and three ship berths.

- N **TEC Terminals – North** – Full-service, truck and rail, deep-water storage and product-handling terminal. Pipeline, above-ground storage direct ship-shore liquid products transfer system and customized storage systems, drumming and packaging.
- S **Atlantic Richfield Co., Houston Refinery** – Company's largest refinery with a daily capacity of 220,000 barrels of crude oil; dock space to handle three tankers or tows of barges at one time; refinery produces full line of products with major emphasis on petro-chemicals; barge, tanker and pipeline shipping facilities.
- S **Sinclair-Koppers Chemical Co.** – Highly automated plant producing styrene monomer, ethylene and propylene.
- S **Goodyear Tire & Rubber Co.** – World's biggest producer of dry type synthetic rubber with current annual capacity of 220,000 long tons of plioflex rubber; plant processes styrene-butadiene rubbers, new high potency anti-ozonant.
- S **Houston Lighting & Power Co.** – Capacity of Deepwater Power Plant 305,000 kw; generating capacity of all company's plants is 6,700,000 kw; company serves 5,600 square-mile area of upper Texas Gulf Coast, including 152 communities.
- N **General American Transportation Corp. (GATX)** – Deepwater tanker dock serves tank farm for storage and distribution of petroleum products, chemicals, vegetable oils, other bulk liquids; also serviced by pipelines, tank cars and trucks.
- S **Bayou Refining Co., Inc.** subsidiary Ada Oil Co. – Produces 7,500 barrels daily of LPG, jet fuel and residual oils.
- N **Velsicol Chemical Corp.** – Benzene purification plant produces solvents, insecticides and fungicides.
- N **Texaco Inc.** – Oil terminal and storage facility; wide slip docks three tankers.
- N-S **City of Houston Water Mains** – Three 60-inch diameter water pipelines pass under the channel bed, carrying potable and industrial water to southside areas.
- S **Rhodia Inc., Chipman Division** – Produces insecticides, herbicides, fungicides and defoliant.
- N **Texas Industries, Inc.** Readymix plant in operation, and land reserves available for other uses or for sale.
- S **Champion Papers**, division of U.S. Plywood-Champion Papers, Inc. – The Pasadena Mill pro-

duces wood pulp and fine writing and printing papers. Daily output 1,000 tons. By-products: tall oil, hydrogen, turpentine, caustic soda. New facility converts bark into soil conditioner, drilling mud additive, other products. Since 1966, \$12 million has been spent on new equipment specifically designed to reduce air and water pollution. A \$10-million capital improvement program will be completed by mid-1973.

- N-S **Washburn Tunnel** – Vehicular tunnel under channel connecting Pasadena with north side communities.
- S **Crown Central Petroleum Corporation** – Refinery with capacity of 85,000 barrels a day; chief products are gasoline, naphthas, heating oils, kerosene, heavy fuels, benzene, xylenes, toluene, ortho-xylene, and petroleum coke; deep-sea dock.
International Calciners, Inc. – Produces 250,000 tons of high-purity calcined petroleum coke a year at Crown Central refinery.
- S **General American Transportation Corp. (GATX)** – Bulk liquid storage facilities of 6.7 million barrel capacity; provides petroleum product servicing for Colonial Pipeline Co. (Houston to New York), Tetco Pipeline (Houston to Midwest), Explorer Pipeline (Gulf Coast to Chicago).
- S **Premier Petrochemical Company** – Manufactures Urea and Melamine. Manufactures 152 million pounds of prilled and solutions Urea and 15 million pounds of Melamine crystals annually.
- S **Horton & Horton** – Road and construction material depot; barge wharves, gravel unloading rig, marine way and repair yard.
- N **Gulf Oil Terminal** – Timber L-head and floating T-head docks can handle nine barges; tug fueling and ship bunker service.
- N **Warrengas Terminal** – Ships natural gasoline and liquefied petroleum gases by special design tanker; wharves handle two vessels simultaneously.
- S **Olin Corp.** – World's largest plant producing high analysis N-P-K pelletized fertilizers as part of 300 acre complex; chief products are mono and diammonium phosphates; fertilizer is made from phosphate rock, captively produced sulfuric acid and ammonia received by barge or pipeline; new dock and unloader for phosphate rock recently completed; facility for loading products to barges and vessels; a new unit produces 70,000 tons a year of Profos, a defluorinated phosphate animal feed supplement; plant also manufactures sodium silicofluoride.
- N **Hess Terminal**, Amerada Hess Corporation – Large terminal and tank farm handling many different

bulk liquid products, petroleum and non-petroleum; 4,500,000-barrel storage capacity; two deep-water ship docks and eight barge docks; pipelines; facilities for butadiene and liquid latex.

- N **Koppers Co., Inc.** – Coal tar distillation plant produces creosote for wood preservative and residual pitch.
- N **Armco Steel Corp.** Houston Works – Fully-integrated steel mill on 800-acre tract has annual capacity of 2 million tons of ingots; new wide flange structural mill; plant produces 1,000 tons of iron a day through a direct reduction process. Imported iron ore, domestic coal, raw materials handled from ships and barges; plant composed of blast furnace, electric furnaces, coke ovens; plate, merchant and structural mills, manufactures high strength carbon and alloy steel products; produces steel plates in finished widths of 144 inches.
- N **A. O. Smith Corp. of Texas** – Produces 24" thru 36" diameter welded steel pipe for gas and liquid transmission pipelines and other structural applications.
- S **Stauffer Chemical Company** – Produces sulfuric acid, phosphoric acids, phosphate fertilizers, mono ammonium and diammonium.
- S **Phillips Petroleum Co.** – Industrial complex on 840 acres includes one of the nation's largest synthetic ammonia plants with 450-ton-a-day capacity; methyl vinyl pyridine plant; nitrogen solution plant; and plans producing polyethylene plastic and polypropylene. Also operates Adams Terminal with berths for five vessels; bulk storage equipment rated at 400 tons per hour; heavy lift equipment and storage space.
- S **Ethyl Corp.** – Large tetraethyl lead plant, which also produces ethyl chloride, merchant aluminum alkyls, sodium and chlorine, vinyl chloride monomer, synthetic primary alcohols, and alpha olefins.
- N **Todd Shipyards Corp.** – Builds all sizes and types of barges, workboats, dredges and offshore drilling structures. With its 12,000-ton dry-dock, concrete piers with gantry crane service, machine shop, plate shop, electric shop, pipe shop, etc., it offers the only complete ship repair service for ocean-going vessels in the Port of Houston. Company also does general steel fabrication and forming, and machining of most all types.
- N **Navigation District Bulk Materials Handling Plant** – Public dock and modern dry bulk commodity handling plant which can load 1,000 tons an hour; equipment for loading, unloading hoppers, box-cars, trucks, ships and barges.

N **Greens Bayou** – Stream was dredged 6,000 feet from mouth to 15-foot depth, 200-foot width; on the banks of this bayou are located:

Brown & Root Marine Operators, division of Brown & Root, Inc. – Constructs offshore drilling platforms; operates fleet of tugs and barges; also operates pipe mill. Marine base for servicing offshore rigs and boats; constructs pre-fabricated offshore drilling platforms.

Greens Bayou Terminal – Barge, rail and truck terminal with large storage area for pipe, oil well supplies, refinery, petrochemical plant equipment; available to shippers is 500-ton capacity barge-mounted crane with 200-foot main boom.

Platzer Shipyard, Inc. – Shipbuilding and marine repairs; marine railway.

Diamond Shamrock Corp. – Products include DDT, chloral, Dacthal, organic arsenate herbicides, muriatic acid and calcium chloride.

Pennsalt Chemicals Corp. – Produces hydrogen sulfide, carbon disulfide, alkyl mercaptans and sulfides used for gas odorization, dyes, rubber goods, pharmaceuticals, insecticides, other products.

Merichem Co. – Produces cresylic acid, phenol and cresol used in plastics and petroleum refining; and sodium sulfide used in mining, textile, chemical industries.

Reichhold Chemicals, Inc. – Manufactures alkyd resins for use in protective coatings; unsaturated polyester resins for use with fiberglass; epoxy resins for protective coatings and adhesives; urea formaldehyde resins and phenol formaldehyde resins as wood adhesives and formaldehyde for industrial applications.

Parker Bros. & Company, Inc. – Barge repair and construction; marine ways.

Tenn-Tex Alloy Corp. of Houston – Produces ferromanganese, ferrosilicon, silicon manganese and other alloys used in producing steel; furnaces produce 2,000 tons of refined metal a month.

Stauffer Chemical Co. – Produces aluminum fluoride, anhydrous and aqueous hydrofluoric acids.

Byer's Barge Terminal – Berths eight barges; 56 acres of storage.

Walton & Son Barge Terminal – Handles bulk and general cargo; steel, pipe; barge slips; storage yards and warehouses.

N-S **Colonial Pipeline Co.** — 36-inch pipeline carrying petroleum products 1,531 miles to New York harbor crosses beneath channel bed; pipeline capacity 1,100,000 barrels daily.

N **Wyatt Division, U. S. Industries, Inc.** — Facilities to construct custom-built barges, drilling platforms, bridge pontoon barges.

N **Jacintoport Corp.**, Subsidiary of Louisiana Land and Exploration Co. — A 4,430-acre industrial development with 3,500-foot slip for deep-sea vessels with barge handling facilities; also railroad and truck facilities.

Cargill, Inc. — Automated export grain elevator with 4.5 million-bushel capacity; 750-foot berths for two ocean-going vessels with water depth in excess of the 40-foot ship channel. Grain unload capacity of 15 rail cars and 15 trucks per hour; load-out capacity averaging 70,000 bushels per hour to bulk carrier type vessels. **Molasses Terminal** with capacity of 6 million gallons, and mixing facilities for additives and liquid feed.

Cargo Carriers, Inc. — a subsidiary of Cargill, Inc.

Dundee Cement Co. — Barge and rail unloading, truck and rail loading facilities for cement; several storage silos.

Dresser Industries, Inc. — Package Compressor Division — Packages and tests compressors and drivers; fabricating shop for structures; equipment for oil power packaging operation; 500-ton traveling crane over barge slip. Contract fabrication and machining services available; large heavy-duty machine shop; qualified for all welding procedures.

Bethlehem Steel Corp. (Jacintoport Terminal) — 1,820-foot concrete wharf on slip 250-feet wide and 4,350 feet long. Terminal and distribution facilities. Fabricating plant for steel reinforcing bars.

CB/Southern, Division of Cooper Industries, Inc. — Construction and assembly of offshore oil and gas compression equipment, large floating gas plants. Plant has fixed craneway with 500-ton lift capacity and 200-foot slip. 27,000 sq. ft. of shop and warehouse space.

Houston Contracting Co. — A 50-acre tract at Jacintoport which serves as base of operations for offshore drilling equipment work; warehouse facilities.

National Marine Service, Inc. — Company has a site on Carpenter's Bayou canal for a future shipyard.

Production Systems International, Inc. — Designers and manufacturers of oil and gas production equipment principally serving the off-shore sector of the oil and gas producing industry; designs and constructs offshore platforms for drilling and production; packages drilling rigs for off-shore drilling; packages compressors for offshore installation world-wide.

Hutchinson-Hayes, Inc. — Manufactures and packages oil-and-gas-field equipment and component systems.

Hill & Hill Truck Line, Inc. — Common carrier specializing in heavy hauling for the oil, gas and steel industries.

Universal Steel Corp. — Warehouse and south-central distribution center for structural steel and coil stock.

AMF Tuboscope — Electronic inspection and analysis of oil field pipe.

S **Tenneco Chemicals, Inc.** — This Tenneco Inc., subsidiary operates petro-chemical complex, including acetylene plant and vinyl chloride monomer plant; natural gas is converted into acetylene, then processed into monomer for use in plastics industry; world's largest single-unit oxygen plant; anhydrous ammonia plant with 216,000-tons-a-year capacity; methanol plant with annual production capacity of 80 million gallons.

S **Shell Oil Co.** — Petroleum refinery with daily capacity of 255,000 barrels on 1,500 acres; produces motor and aviation gasolines, jet fuels, naphthas, kerosene, fuel oils; tank farm capacity 12 million barrels; facilities include huge catalyticfeed hydrotreaters, depropanizer, and aromatics recovery units; a new unit produces 200 million pounds of orthoxylene each year.

S **Shell Chemical Co.** — Utilizes refinery gases in the manufacture of numerous organic chemicals at largest chemical plant complex on channel; produces raw materials used in manufacture of paints, plastics, medicinals, pharmaceuticals, textiles, explosives; manufactures acetone and plasticizer alcohols. Two new units each recover 150 tons of sulfur daily; vinyl chloride monomer facility with daily capacity of 1,000 tons; ethylene plant.

S **The Lubrizol Corp.** — Produces an extensive line of chemical additives which improve the performance of motor oils, automatic transmission fluids, gear oils, gasoline and diesel fuels used in cars, trucks, buses, off-the-road equipment, and railroad and marine diesel.

S **Diamond Shamrock Corp.** — Produces chlorine, caustic soda, ethylene dichloride, perchlo-

rethylene, trichlorethylene and other chlorinated solvents, polyvinyl chloride resins, vinyl chloride monomer, acetylene, ammonia, anhydrous HCl, sodium methylate, hydrogen.

- S **Union Carbide Corp.**, Linde Division – Multiple plant complex producing oxygen, nitrogen and argon. Plant has daily capacity of 1475 tons of liquid and gaseous oxygen, 2000 tons of nitrogen and .36 tons of argon. Multiple pipeline complex supplies nitrogen and oxygen to other industry along the Houston Ship Channel. Liquid capacity for supplying Southwest area in products. Storage facilities include some of the largest cryogenic vessels in the Southwest for nitrogen and oxygen storage.
- S **Rohm and Haas Texas, Inc.** – Manufactures various intermediate chemicals used in making plastics, coating resins, plywood adhesives, industrial chemicals; nation's top producer of acrylate monomers with total plant capacity of 400 million pounds a year; facilities for oil additives, acetylene, ammonia and methanol production. Produces methyl methacrylate monomer at a rate of 400 million pounds a year.
- S **Southwest Cryogenics, Inc.** – Plant produces high purity, food grade, carbon dioxide – liquid, gas and solid (dry ice). Also research and medical gases and special gas mixtures. Supplies carbon dioxide by pipeline to other channel industries.
- S **Equity Export Corp., Inc.** – A six-million-bushel capacity shipside grain elevator on a deepwater slip; automatic railcar unloader, 400-railcar storage, automatic truck loaders.
- S **J and R Dock** – General cargo wharf and warehouse facilities; 90,000-sq.-ft. steel warehouse; covered unloading ramp; truck lift unloading ramp.
- N **Petro Chemical Investment Corp.** – Produces polystyrene used in packaging, furniture, toys, etc.
- S **TEC Terminals – South** – Full-service, truck and rail, deep-water storage and product-handling terminal. Pipelines, above-ground storage, direct ship-shore liquid products transfer system and customized storage systems.
- S **Phillips Industrial Sites** – Large tracts held by Phillips Petroleum around San Jacinto Battleground for resale as plant sites.
- S **Celanese Plastics Co.**, division of Celanese Corporation of America – Produces low-pressure polyethylene molding granules, high-density polyethylene, nylon molding materials for use as gears, valves, mechanical parts in place of metal.

- S **Rollins International, Inc.** – A full service facility housing 1) **Rollins-Purle, Inc.** – a regional pollution control plant for processing concentrated wastes and effluent discharges from ship channel industries; 2) **Matlack, Inc.** – a major common carrier tank truck operator distributing bulk liquid and dry products; and 3) **Rollins Communications, Inc.** – a service facility for installation and maintenance of business communication systems.
- S **Diamond Shamrock Corp.** – Produces polypropylene resins used in molded parts in automotive and appliance industries; capacity of 90 million pounds a year.
- S **Texas Alkyls, Inc.** – Produces special organometallic chemicals used in preparation of various polymerization catalysts for manufacture of plastics and elastomers, olefins and pyrophoric jet fuels.
- S **San Jacinto Monument** – Tallest monumental shaft in the world, 570 feet high, located on battlefield where General Sam Houston defeated Mexican forces to establish Republic of Texas in 1836.
- N **Millray Corp. of Houston** – Company has plant sites and terminal facilities along Carpenter's Bayou on 142-acre tract.
- N **Southwestern Barge Fleet Service, Inc.** – Barge fleet mooring and marshaling area up the San Jacinto River; 500-ton dry dock. Barge cleaning and repairs.
- N **Channel Shipyard Co., Inc.** – Barge cleaning and repairing; dry-dock facilities for sandblasting and painting.
- N **Arco Chemical Co.**, division of Atlantic Richfield Co. – Plant makes butadiene alkylate, from butane hydrocarbons. Produces styrene maleic anhydride resins; polybutadiene liquid resins; methyl-ethyl-ketone used as solvent in coatings; high-purity isophthalic acid from metaxylene and isopropyl alcohol from crude acetone.
- N **Southland Paper Mills, Inc.** – Produces newsprint and kraft paper at a daily capacity of 675 tons on 1,000-acre site.
- N-S **Lynchburg Ferry** – A cross-channel facility for local vehicular traffic.
- S **Southwest Chemical & Plastics Co.** – Produces pigmented plastics; dispersions of carbon black in resins, cable and plastic pipe-grade concentrates. Specialty organic chemical manufacturing.
- S **Pearsall Corporation** – Produces anhydrous aluminum chloride and nickel chloride.
- S **National Petro Chemicals Corp.** – Produces high-density linear polyethylene resins.

- S **Upjohn Co.**, Polymer Chemicals Division – Produces isocyanates for use in manufacture of drugs, adhesives, urethanes (flexible and rigid foams and elastomers); capacity about 200 million pounds annually; phosgene plant produces 100 million pounds annually. Urethane isocyanate plastic foams produced here are used in cushioning, packaging, clothing, bedding, flotation, furniture, and insulation. It is one of the largest plants of this type in the world.
- S **U. S. Industrial Chemicals Co.**, division of National Distillers and Chemical Corp. of New York – World's largest vinyl acetate monomer plant. Company also produces both high and low density polyethylene resins at this location.
- S **Houston Lighting & Power Company** – Capacity of Sam Bertron Plant 750,000 kw.
- S **Alexander Island** – Some 1,350 acres are available on low-lying island for future port development and industrial sites.
- N **Ashland Chemical Co.**, division of Ashland Oil, Inc. – A 30,000-ton synthetic rubber plant producing combinations of synthetic rubber and carbon black, with an adjacent synthetic latex plant.
- N **Humble Oil & Refining Company** – The Baytown Refinery is a fully integrated petroleum refining operation, manufacturing a complete line of petroleum products including fuel products, lubes, waxes, and solvents. Essentially all major types of petroleum processing operations are represented. Crude input capacity of 345,000 barrels per day makes the Baytown Refinery one of the largest in the United States.
- N **Enjay Chemical Co.** – Chemical complex first began producing aromatics and solvents after World War II, then began operating butadiene and butyl rubber plants. Later a paraxylene unit was constructed to produce raw materials for synthetic fibers. Production was expanded to include benzene, ethylene, linear paraffins and ethylbenzene. In 1960 a large polypropylene plant was constructed and paraxylene, benzene and toluene capacity was greatly enlarged, new desulfurization process units were completed, and orthoxylene production increased. Cyclohexane and benzene production has been increased. Baytown Plant's polypropylene polymer production facilities have been increased to about 300 million pounds a year.
- N **Stauffer Chemical Co.** – Modern sulfuric acid regeneration plant, sulfur recovery plant and liquid hydrogen sulfide unit.
- N **Natural Gas Odorizing**, division of Helmerich & Payne, Inc. – Organic chemical plant which produces specialty chemicals for gas transmission, distribution industries.
- S **E. I. du Pont de Nemours & Co., Inc.** – Produces methylamines, agricultural herbicides, fungicides, sulfuric acid, hydrofluoric acid and tetrahydrofuran.
- S **Air Products and Chemicals, Inc.** – Only merchant facility in U.S. producing commercial hydrogen and carbon monoxide for pipeline, tube trailer and cylinder users. Also on site is nitric oxide plant and a specialty gas facility with full blending facilities.
- N-S **Baytown-La Porte Tunnel** – A 3,000-foot vehicular tube under the Ship Channel.
- S **Barbour Terminal** – A side channel 8,000 feet in length and turning basin 1,100 feet in width with locations of these companies:
Tenneco Oil Co. – This Tenneco Inc. subsidiary operates a fractionating plant that produces butanes, propane, natural gasoline and isobutane. Also water craft service facilities operated by **Prince Green's Yacht Basin, Anchor Boat Works, Inc., G & H Towing Co., I.T.T. Corp., Norris & Sanford and Standard Dredging Corp.**
- N **Cedar Bayou Channel** – A study of advisable navigation improvement is being made for shallow-draft, 5.5-mile channel.
- N **Mobay Chemical Co.** – A major petrochemical complex on a 550-acre tract at Cedar Bayou to provide raw materials as well as intermediate processing steps required for production of isocyanates.
- N **J. M. Huber Corp.** – Produces carbon black and newspaper printing ink.
- N **United States Steel Corp.** – Texas Works – Initial facilities include 160-inch-plate mill, along with auxiliary facilities: reheat furnaces, flame cut and shearing units, heat-treating equipment, metallurgical and chemical laboratories and barge dock on Cedar Bayou. Steelmaking plant includes two 200-ton electric furnaces and continuous slab caster. Mill produces wide range of carbon and alloy steel plates up to 150 inches wide, 1,500 inches long and in thickness from 3/16 to 15 inches. Plant capacity is over a million tons of steel plate annually. The most modern, technologically advanced environmental control systems have been installed.
- N **Houston Lighting & Power Company** – Cedar Bayou Plant is one of the two largest generating

stations of the company's system, with two 750,000 kw units.

- N Gulf Oil Chemicals Company** – Three major units for plastics and olefins manufacturing on 1,000-acre tract; initial olefins plant produces ethylene and high purity propylene; second unit produces normal alpha olefins used in biodegradable detergents, chemical intermediates, rubber and plastics formulations; third unit produces 200 million pounds of polyethylene resin a year.
- S Chemetron Chemicals**, division of Chemetron Corp. – Produces phosgene and chloroformate and carbonate derivatives used in production of organic chemicals.
- S Morgan Point** – 25 miles from Turning Basin, Ship Channel meets Galveston Bay at Harris County boundary. Open Gulf is 25 miles away.
- N Atkinson Island Barge Assembling Basin** – U.S. Army Engineers constructed basin 150 feet wide, 2,300 feet long, with heavy-duty moorings.
- S Bayport** – Industrial complex developed by Friendswood Development Company, a subsidiary of Humble Oil & Refining Company, is located on an 8,750-acre tract 23 miles southeast of downtown Houston and has frontage on Galveston Bay. The Bayport Channel is open to barge traffic connecting with the Houston Ship Channel two miles offshore in Galveston Bay. A turning basin and dock are now complete. Construction of deep water port facilities will be completed in 1973. Utility services, industrial water, surface drainage and waste disposal systems, roads and railroad tracks are available to all sites. The value of plants in operation, under construction, or announced totaled \$300 million at the start of 1972.

American Cryogenics, Inc. – An air separation plant which produces over 400 tons daily of liquid and gaseous oxygen, nitrogen, argon.

Celanese Chemical Co., division of Celanese Corp. – Production facilities include acetaldehyde, acetic acid, vinyl acetate, ethylene oxide, ethylene glycol and ethylene glycol derivatives. Owns 1,000 acres.

Oxirane Chemical Co., division of Atlantic Richfield Co. and Halcon International – Produces propylene oxide and propylene glycols. Capacity of 160 million pounds of propylene oxide a year.

Arco Chemical Co., division of Atlantic Richfield Co. – 106 acres. Plans to be announced.

Big Three Industries, Inc. – Largest producer of industrial gases in Southwest. Produces 6,200 tons of liquid and gaseous oxygen, nitrogen and

argon; liquefies 800 tons of products a day; steam generating capacity 2.0 million pounds an hour; major cryogenics plant operating.

Southwest Latex Corp. – Produces styrene and butadiene latex used in paint manufacture and as a paper and textile coating.

Dart Industries – Six acres. Plans to be announced.

Velsicol Chemical Corp., subsidiary of Chicago and Northwestern Railway Co. – Highly automated agricultural chemicals plant produces methyl parathion, utilizing aromatic feedstocks.

Dixie Chemical Co. – Proprietary and contract chemical manufacturer. Produces glycols, ketones, olefins and epoxides. Distributer and manufacturer of commodity and specialty chemicals; industrial hypochlorite manufacturing; repackaging of chemicals from bulk supplies. Operates a facility for cylinder filling of liquified gases such as anhydrous ammonia and chlorine.

Haldor Topsoe, Inc. – Chemical Engineers, offers process licensing and engineering for plants for production of hydrogen, ammonia, methanol, formaldehyde and other chemicals.

Houdry-Topsoe Company – A joint venture of Haldor Topsoe, Inc. and Air Products and Chemicals, Inc. – Produces ammonia catalyst. Building plant for manufacture of catalysts used in production of hydrogen, synthesis gas, sulfuric acid, methanol and other chemicals.

Bayport Fabricating Co. – Fabricators of pressure, process and storage vessels from alloyed metals for petroleum and chemical industries.

Petrolite Corp. – 85 acres. Plans to be announced.

Signal Chemical Co. – Plant on 150-acre site manufactures hydroquinone, para-isopropylphenol, diisopropylbenzene monohydroperoxide and acetone. Hydroquinone is used as a monomer inhibitor in making rubber antioxidants and is a photographic chemical. Para-isopropylphenol is an intermediate in the manufacture of aromas, agricultural chemicals and antioxidants. Diisopropylbenzene monohydroperoxide is a rubber polymerization initiator.

The Lubrizol Corporation – Produces coating chemicals for the appliance and metal working industries as well as polymer chemicals which improve the processing, handling and performance of plastics.

FMC Corporation – Plant on 243-acre site produces synthetic glycerine, epoxidized soybean

oil, allyl alcohol, acetic acid and other chemicals.

Lockheed Aircraft Corp. — 500 acres. Plans to be announced.

Lone Star Industries, Inc. — Ready Mix concrete plant.

Gulf Coast Chemicals Co., Inc. — Five acres. Plans to be announced.

Jersey Enterprises — 120 acres. Plans to be announced.

S Manned Spacecraft Center — NASA — Occupies 1,620 acres with 58 buildings. Center provides technological and administrative support, research, testing and flight crew operations and serves as mission control center for Apollo and other space programs. Located on shoreline of Clear Lake with access to channel through Clear Lake Channel and Galveston Bay.



INDEX

- A**
- 17 AMF Tuboscope
 - 21 Air Products & Chemicals, Inc.
 - 20 Alexander Island
 - 10 American Commercial Lines, Inc.
 - 22 American Cryogenics, Inc.
 - 11 American Plant Food Corp.
 - 21 Anchor Boat Works, Inc.
 - 19,22 Arco Chemical Co.
 - 14 Armco Steel Corp.
 - 9 Armour Agricultural Chemical Co.
 - 20 Ashland Chemical Co.
 - 22 Atkinson Island Barge Assembling Basin
 - 12 Atlantic Richfield Co., Houston Refinery
- B**
- 21 Barbours Terminal
 - 12 Bayou Refining Co., Inc.
 - 21 Baytown-LaPorte Tunnel
 - 23 Bayport Fabricating Co.
 - 22 Bayport
 - 16 Bethlehem Steel Corp.
 - 22 Big Three Industries, Inc.
 - 10 Bludworth Shipyard, Inc.
 - 10 Brays Bayou
 - 8 Brown & Root, Inc.
 - 15 Brown & Root Marine Operators
 - 15 Byer's Barge Terminal
- C**
- 16 CB/Southern, division of Cooper Industries, Inc.
 - 16 Cargill, Inc.
 - 16 Cargo Carriers, Inc.
 - 21 Cedar Bayou Channel
 - 22 Celanese Chemical Co.
 - 18 Celanese Plastics Co.
 - 12 Champion Papers, Div. U.S. Plywood
 - 19 Channel Shipyard Co., Inc.
 - 11 Charter International Oil Co.
 - 22 Chemetron Chemicals
 - 12 City of Houston Water Mains
 - 11 Clinton Island Turning Basin
 - 16 Colonial Pipeline Co.
 - 9 Crispin Terminal
 - 13 Crown Central Petroleum Corp.
- D**
- 23 Dart Industries
 - 15,17,19 Diamond Shamrock Corp.
 - 10 Dickson Industrial District
 - 23 Dixie Chemical Co.
 - 16 Dresser Industries, Inc.
 - 16 Dundee Cement Co.
 - 21 E. I. du Pont de Nemours & Co., Inc.
- E**
- 10 Elco Shipyards Elevator
 - 9,20 Enjay Chemical Co.
 - 18 Equity Export Corp., Inc.
 - 14 Ethyl Corp.
- F**
- 23 FMC Corporation
- G**
- 9,21 G & H Towing Co.
 - 12,13 General American Transportation Corp.
 - 11 Goodpasture, Inc.
 - 12 Goodyear Tire & Rubber Co.
 - 15 Greens Bayou
 - 15 Greens Bayou Terminal
 - 11 Gulf Atlantic Warehouse Co.
 - 8 Gulf Bitulithic Co.
 - 22 Gulf Oil Chemicals Co.
 - 24 Gulf Coast Chemicals Co., Inc.
 - 9 Gulf Coast Portland Cement Co.
 - 13 Gulf Oil Terminal
- H**
- 23 Haldor Topsoe, Inc.
 - 10 Harrisburg Machine Co.
 - 14 Hess Terminals
 - 17 Hill & Hill Truck Line, Inc.
 - 8,13 Horton & Horton
 - 23 Houdry-Topsoe Co.
 - 8 Houston Barge Side Warehouse, Inc.
 - 8 Houston Barge Terminal
 - 16 Houston Contracting Co.
 - 8,12,20, & 21 Houston Lighting & Power Co.
 - 8 Houston Shell & Concrete Co.
 - 21 J. M. Huber Corp.
 - 20 Humble Oil & Refining Co.
 - 17 Hutchinson-Hayes, Inc.
- I**
- 21 I.T.T. Corp.
 - 11 Ideal Cement Co.
 - 13 International Calciners, Inc.
- J**
- 18 J and R Dock
 - 16 Jacintoport Corp.
 - 24 Jersey Enterprises
- K**
- 14 Koppers Co., Inc.
- L**
- 10 La Gloria Oil and Gas Co.
 - 24 Lockheed Aircraft Corp.
 - 10,11,24 Lone Star Industries, Inc.
 - 9 Lone Star Marine Salvage Co.
 - 17,23 Lubrizol Corp.
 - 19 Lynchburg Ferry

- M**
- 11 Manchester Terminal
 - 10 Mangone Shipbuilding Co.
 - 24 Manned Spacecraft Center - NASA
 - 10 Marine Repairs, Inc.
 - 19 Matlack, Inc.
 - 15 Merichem Co.
 - 19 Millray Corp. of Houston
 - 21 Mobay Chemical Co.
 - 16 Molasses Terminal
 - 22 Morgan Point
- N**
- 16 National Marine Service, Inc.
 - 10 National Molasses Co.
 - 19 National Petro Chemicals Corp.
 - 21 Natural Gas Odorizing, division of Helmerich & Payne, Inc.
 - 10 Navigation District
 - 14 Navigation District Bulk Materials Handling Plant
 - 21 Norris & Stanford
- O**
- 11 Occidental Chemical Co.
 - 10 Old Manchester Wharves
 - 13 Olin Corp.
 - 22 Oxirane Chemical Co.
- P**
- 9 Pacific Molasses Co.
 - 8,15 Parker Bros. & Co., Inc.
 - 19 Pearsall Corporation
 - 15 Pennsalt Chemicals Corp.
 - 10 Petco Docks
 - 18 Petro Chemical Investment Corp.
 - 23 Petrolite Corp.
 - 11 Petro-Tex Chemical Corp.
 - 18 Phillips Industrial Sites
 - 14 Phillips Petroleum Co.
 - 15 Platzer Shipyard, Inc.
 - 10 Port Houston Industrial Park
 - 13 Premier Petrochemical Co.
 - 21 Prince Green's Yacht Basin
 - 17 Production Systems International, Inc.
 - 9 Public Grain Elevator
- R**
- 9,11 Radcliff Materials, Inc.
 - 15 Reichhold Chemicals, Inc.
 - 12 Rhodia, Inc., Chipman Division
 - 18 Rohm & Haas Texas, Inc.
 - 19 Rollins Communications, Inc.
 - 19 Rollins International, Inc.
 - 19 Rollins-Purle, Inc.
- S**
- 19 San Jacinto Monument
 - 9 Sea-Land Service, Inc.
 - 17 Shell Chemical Co.
 - 17 Shell Oil Co.
 - 9 Shiplside Warehouse No. 4
 - 23 Signal Chemical Co.
 - 11 Sims Bayou Bulk Liquid Petroleum Facility
 - 12 Sinclair-Koppers Co.
- 14 A. O. Smith Corp. of Texas
 - 10 South Coast Terminals, Inc.
 - 8 Southern Pacific Co.
 - 11 Southern Pacific Co., Clinton Docks
 - 19 Southland Paper Mills, Inc.
 - 19 Southwest Chemical & Plastics Co.
 - 18 Southwest Cryogenics, Inc.
 - 23 Southwest Latex Corp.
 - 19 Southwestern Barge Fleet Service, Inc.
 - 21 Standard Dredging Corp.
 - 10,14,15 Stauffer Chemical & Co.
 - 9 Jacob Stern & Sons, Inc.
- T**
- 12,18 TEC Terminals
 - 17 Tenneco Chemicals, Inc.
 - 21 Tenneco Oil Co.
 - 15 Tenn-Tex Alloy Corp. of Houston
 - 12 Texaco, Inc.
 - 19 Texas Alkyls, Inc.
 - 12 Texas Industries, Inc.
 - 14 Todd Shipyards Corp.
 - 8 Trinity Division, Portland Cement Co.
 - 9 Turning Basin
 - 9 Turning Basin Compress Co.
- U**
- 18 Union Carbide Corp.
 - 11 United States Gypsum Co.
 - 20 U. S. Industrial Chemicals Co.
 - 12 U. S. Plywood - Champion Papers, Inc.
 - 21 United States Steel Corp.
 - 10 U. S. Steel Supply Division
 - 17 Universal Steel Corp.
 - 20 Upjohn Co.
- V**
- 12,23 Velsicol Chemical Corp.
- W**
- 15 Walton & Son Barge Terminal
 - 13 Warrengas Terminal
 - 13 Washburn Tunnel
 - 16 Wyatt Division, U. S. Industries
- Y**
- 8 John Young Co.

A TOTAL of 155 companies have plants and facilities that are located along the Houston Ship Channel. Texas Commerce Bank works for 76 of these 155 companies.

This is the \$1.5-billion Houston bank that also works for -

- ☆ 71 companies whose annual sales are above the billion-dollar level.
- ☆ 4900 other companies, some large, some small.
- ☆ 92 chemical companies.
- ☆ 50,000 Houston families.

Texas Commerce Bank's extensive international banking activities now include representative offices in Mexico City and Tokyo, a Nassau branch in the Bahamas and a London affiliate, Burston & Texas Commerce Ltd. With the backing of these offices, the bank's International Division provides companies in the Southwestern U.S. with a full range of international banking services, including financing for overseas expansion programs.

Our experienced staff of 1,100 stands ready to meet your company's banking needs, whether domestic or international.



MEMBER TEXAS COMMERCE BANCSHARES, INC.
P.O. BOX 2558, HOUSTON, TEXAS - 77001
PHONE: (713) 224-5161